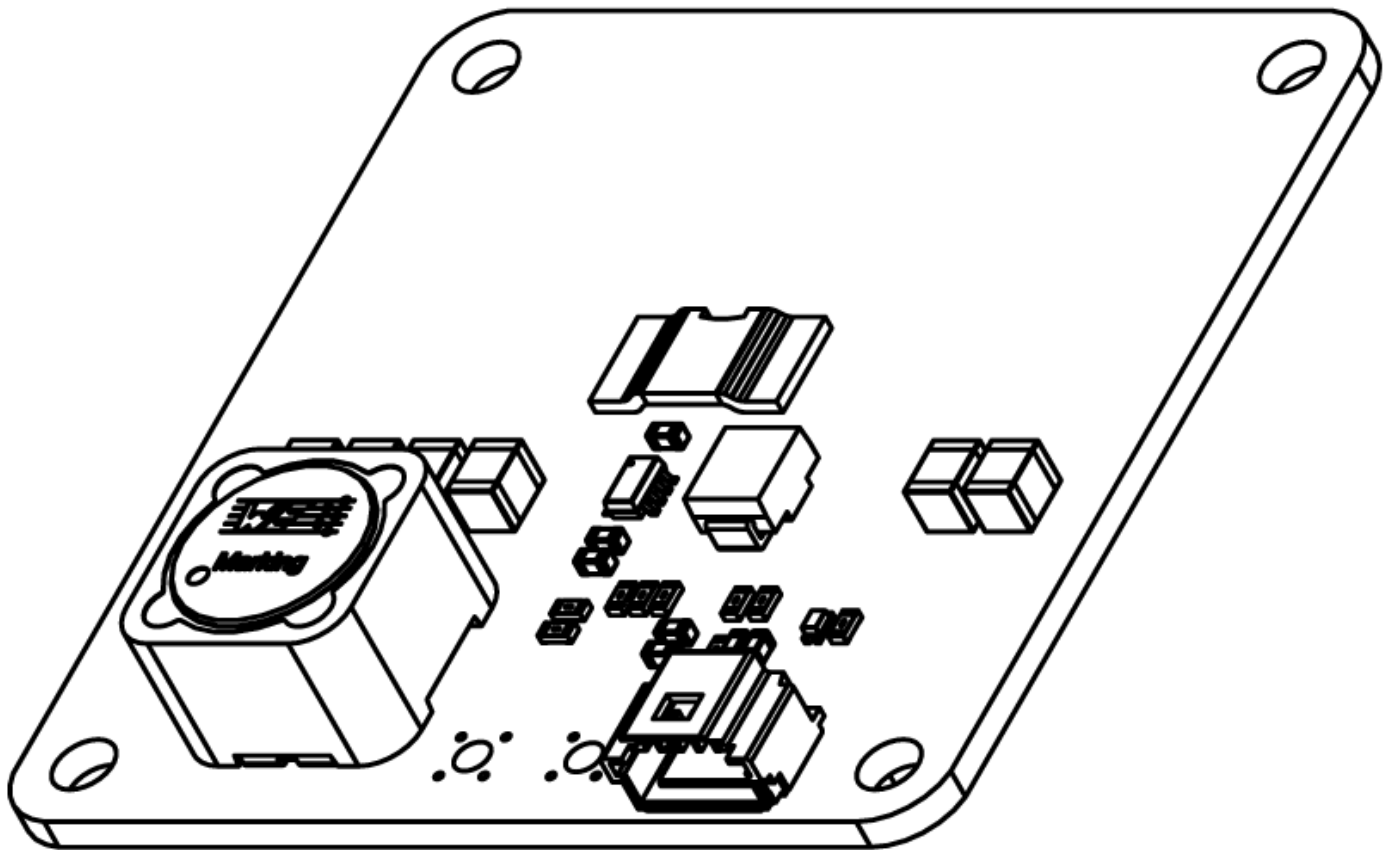

INDIPOWER-150A

v 1.0
2026.03

User Manual



Overview & Specifications

The **IndiPower 150A** is a heavy-duty Power Distribution Board (PDB) engineered for high-power UAVs, industrial drones, and autonomous systems. Designed to handle demanding applications, it efficiently distributes power from high-voltage battery systems while providing stable regulated outputs for onboard electronics.

With support for up to **14S LiPo batteries** and high current capacity, this board ensures reliable performance in advanced drone platforms and heavy-lift configurations.

Key Features

- Supports **3S–14S LiPo batteries**
- High current handling: **150A continuous, 200A burst (<60 sec)**
- Dual regulated outputs:
 - **12V / 3A Buck Converter**
 - **5V / 2A Output**
- Designed for **high-power UAV systems**
- Efficient and stable power distribution
- Compact and robust PCB layout
- Suitable for industrial and heavy-lift drones



Key Features

Parameter	Value
Input Voltage	3S – 14S LiPo (11.1V – 58.8V)
Continuous Current	150A
Burst Current	200A (< 60 sec)
12V Output	3A max
5V Output	2A max
Power Architecture	Integrated Buck Converters
Application	Heavy-lift UAVs, industrial drones



Package Contents

- 1 × IndiPower 60A PDB
- 1 × Pin header set (if applicable)
- Documentation (user manual)

Safety Information

- Always verify **battery polarity before connection**
- Do not exceed **150A continuous rating**
- Ensure proper heat dissipation under high loads
- Use **high-quality soldering and thick wires**
- Disconnect battery during installation and maintenance

Installation & Usage

Hardware Layout Overview

- **Main Battery Input Pads** – High current input
- **High Current Output Pads** – Distribution to ESCs
- **12V Buck Converter Section** – For payloads/accessories
- **5V Regulator Output** – For flight controller & electronics
- **Mounting Points** – Secure installation



Installation Guide

Step 1: Mounting

- Secure using metal standoffs or vibration-damping mounts
- Ensure adequate airflow for cooling

Step 2: Battery Connection

- Solder battery leads to main input pads
- Use **10–12 AWG wires** for high current applications
- Double-check polarity before powering

Step 3: ESC / Load Connection

- Connect ESC power leads to output pads
- Ensure even load distribution across pads

Step 4: Powering Electronics

- Connect:
 - **12V output** → cameras, payloads, accessories
 - **5V output** → flight controller, receiver, GPS

Step 5: System Integration

- Route wiring cleanly to avoid interference
- Ensure secure connections before powering system

Operating Guidelines

- Perform **initial power-on test without propellers**
- Monitor temperature during first flights
- Avoid prolonged use at burst current (200A)
- Use proper wire gauge and connectors for safety
- Ensure airflow for cooling in enclosed builds



Maintenance

1. Inspect solder joints regularly
2. Keep board clean from dust and debris
3. Check connectors before each flight

Troubleshooting

Issue	Possible Cause	Solution
No power output	Loose connection	Check solder joints
Overheating	Excess current	Reduce load
ESC not working	Signal issue	Verify PWM wiring
FC not powering	Regulator overload	Check 5.2V usage



Battery & Power Safety

WARNING

Incorrect battery usage may result in fire, explosion, or permanent damage.

- Use only batteries that meet the recommended voltage and current specifications.
- Verify correct polarity before connecting the power supply.
- Do not exceed the maximum input voltage rating of the power module.
- Never use damaged, swollen, or leaking batteries.

CAUTION

Improper power connections can damage the power module and connected components.

- Ensure all power connections are secure and properly insulated.
- Avoid connecting or disconnecting power while the system is active.
- Monitor battery levels to prevent deep discharge.

EMERGENCY NOTICE

- In case of overheating, unusual smell, or smoke, immediately disconnect power.
- Move the system to a safe, non-flammable area.
- Do not reuse the battery until it has been inspected.



Warranty & Support

Warranty Terms

The power module is covered by a **limited warranty** against manufacturing defects in materials and workmanship under normal use.

Warranty Period: 12 months from the date of purchase.

The warranty applies only to the original purchaser and is non-transferable.

WHAT IS COVERED

- Manufacturing defects in hardware components
- Failure under normal operating conditions as described in this manual

WHAT IS NOT COVERED

- Damage caused by improper installation, wiring, or misuse
- Damage due to crashes, physical impact, or water exposure
- Electrical damage due to incorrect voltage, reverse polarity, or power surges
- Unauthorized modifications or repairs
- Normal wear and tear

IMPORTANT

Proof of purchase is required to claim warranty. Indiflo reserves the right to inspect and verify the defect before approving any claim.



Support Contact

For technical support, troubleshooting, or warranty claims, please contact:

Email: support@indiflo.com

Website: www.indiflo.com

Response Time: Typically, within 24–72 business hours

When contacting support, please provide:

- Product model and version (e.g., V1 / V1 Pro)
- Description of the issue
- Photos or videos (if applicable)
- Purchase details

Service Process:

1. Contact support and describe the issue.
2. Receive troubleshooting steps or service authorization.
3. If required, ship the product to the designated service center.
4. After inspection, the unit may be repaired, replaced, or returned based on warranty status.
 - The customer is responsible for total shipping costs unless covered under warranty. (The customer will be responsible for covering the shipping costs associated with shipping the item when under warranty.)
 - Repair or replacement timelines may vary depending on issue severity and part availability.

